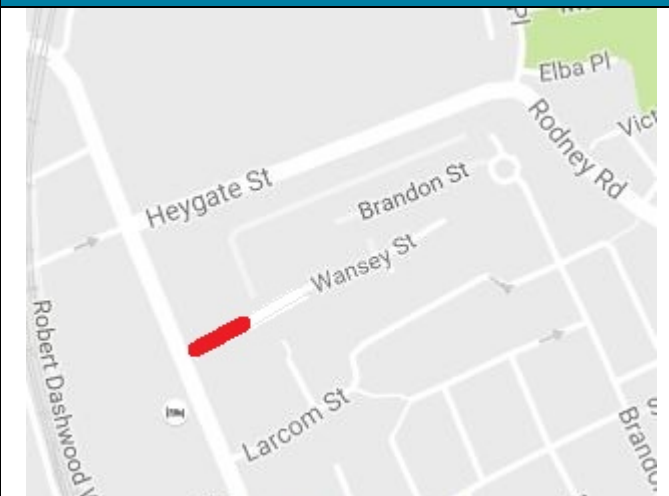


<b>Team / department</b>	Network Development	<b>Location overview</b>
<b>Reference</b>	60303042	
<b>Location</b>	Wansey Street from the junction of Walworth Road to outside Garland Court	
<b>Proposal</b>	To introduce a prohibition of motor vehicles.	
<b>Community council meeting</b>	To introduce a prohibition of motor vehicles.	
<b>Community council date</b>	23 November 2016	
<b>Ward(s) affected</b>	East Walworth	

### Request

On 15 January 2013 Southwark Council Planning Committee approved the outline planning application number 12/AP/1092 for the redevelopment of the former Heygate Estate including new landscaping, park and public realm, car parking, means of access and other associated works.

The developer subsequently developed the design for the public realm works and this design was submitted to the Planning Committee and approved under planning application 13/AP/3582.

A highways officer has reviewed the proposals and found them to be acceptable from a highway design perspective. In order to implement these changes it is now necessary to make traffic regulation orders.

### Location

Wansey St is a residential road that marks the southern boundary of the Heygate redevelopment. As part of the construction of the new Elephant Park development

### Investigation and conclusions

As part of the redevelopment proposals for the area a scheme has been approved to create a high quality public space outside the Town Hall on Wansey St.

In order to create a new public square using high quality materials that will remain an attractive space for years to come it is proposed to make this space for pedestrians and cyclists only (with the exception of occasional access by authorised people such as maintenance vehicles and the emergency services).

### Recommendation

To introduce a prohibition of motor vehicles to the section of Wansey Street from Walworth Road to outside 1-13 Garland Court.

All existing parking orders within this section of road will be revoked once the new order is implemented.

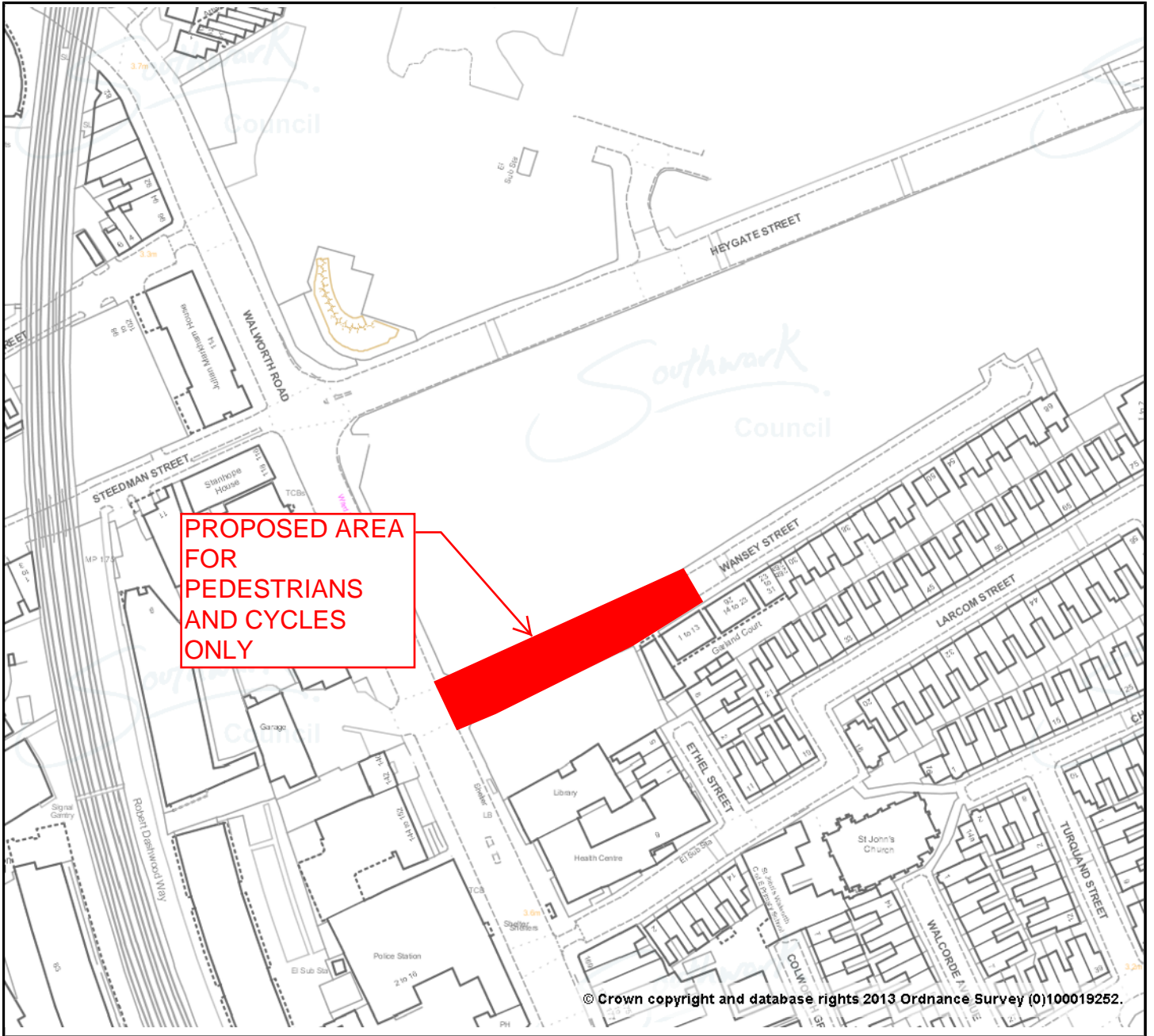
A draft design drawing of the proposal is provided within this document.

### Next steps

Should the community council approve this traffic order amendment, it is expected that statutory consultation will commence in December.

Should objections be received during the statutory consultation period, these will be presented at the next community council meeting for determination.

Following the statutory consultation period, if no substantive objections are received, the developer will begin detailed design and construction of the described changes, this is likely to take 18 months to complete.



Show more on the map  
EXCD\_OutsideOfSouthwark\_mask  
■ EXCD\_OutsideOfSouthwark\_mask

